

CONGRUITY CONNECTION



Cliff's Notes

One of the first jokes/riddles that I remember telling to my parents was this: "If April showers bring May flowers, what do May flowers bring?" I remember my parents hamming it up and letting on that they were trying to figure out the answer and after a few moments of shoulder shrugging and scratching of their heads, they said they didn't know. To which I said: "Pilgrims". I eventually learned that this was an old joke/riddle but I appreciated the way they played along with my telling of the riddle. The other day, I found myself thinking of that joke and its answer.

A pilgrim is defined as being "a traveler who is on a journey to a holy place". Doesn't that define us as we endeavor to live out our faith along the road of life? In John 14, Jesus talks about there being many rooms in his Father's house and that he is preparing a place for us. So as we traverse our way through his labyrinth we call life, we are on a pilgrimage to that place prepared for us in heaven. Sometimes our pilgrimage is more like a roller coaster ride than a leisurely stroll isn't it, but the Good News for us is that we travel not alone—Christ is with us through each and every step as are our sisters and brothers in the faith and we are surrounded by a great cloud of witnesses—those who have gone before us. I really like the image that old joke conveys of us being pilgrims.

There are some important celebrations which are part of our pilgrimage in the month of May. First, on May 8th we celebrate Mother's Day and we wish all mothers in our church family a Happy Mother's Day. On May 15th we will be celebrating Pentecost, the birthday of Church of Jesus Christ, everyone is asked to wear red that day and the members of the Confirmation Class will be received into membership. And then on May 29th we will honor and remember those who served in the military as the local VFW/American Legion group holds their Memorial Day service in the cemetery.

May God continue to bless us pilgrims as we continue to live out our faith day to day and as we are engaged in doing the things that God calls us to do.



Yours in Christ,
Cliff



WORSHIP LEADERS FOR MAY

Liturgists

E L D E R S

John Blank
Tim D'Aurora
Dave Foresman
Kathy Hamilton
Carol Hohman
Jim Kepple
Scott McInay
Terry Selembo
Linda Youngbauer

5/1	Dave Foresman
5/8	Janet Rugh
5/15	John Blank
5/22	Evelyn Foresman
5/29	Caroline D'Aurora



Those scheduled to serve Communion on May 15th are:
Dave Foresman John Blank Kathy Hamilton
Jay Perino Debbie Perino

If you would like to serve as a liturgist please see Cliff.
If you are interested in becoming an acolyte please see
Dave or Pam Foresman.



SEPARATED BY SPACE UNITED IN PRAYER

D E A C O N S

Sue Derek
Evelyn Foresman
Phyllis Frye
Sandy Kemerer
Nancy Lauffer
Debbie Perino
Jay Perino
Janet Rugh
Mim Schweppe

The congregations and pastors from Neighborhood 1 for our prayer support during the month of May are as follows:
5/1 Avonmore † Larry Armstrong, Stated Supply
5/8 Delmont † Caroline Vickery, Pastor
5/15 Lower Burrell, Grace Community † Ken Foust, Pastor
5/22 Lower Burrell, Puckety † Kirk Orr, Pastor
5/29 Redstone Presbytery † Donald Sherrill, Honorably Retired

SYMPATHY



We extend our sympathy to the Stopansky family as they walk through the valley of the shadow of Ced's aunt Dorothy Pityk's death. May God's presence give you comfort and strength in your time of loss.

MAY CELEBRATIONS

BIRTHDAYS

5/1	Dave Bish	5/17	Linda Hazlett
	Lisa Kaufman		Joelyn Watt
5/2	Nancy Lauffer	5/18	Susan Blank
5/3	Larry Swatchick	5/20	Cindy Karstaedt
5/12	Roni Kaufman	5/23	Rose Ann Orr
5/15	Lucha Batera	5/24	Jennifer Carnathan
	Ron Kaufman	5/28	Becky Swatchick
	Linda Youngbauer		
5/16	Bryce Kaufman		



ANNIVERSARIES



5/3/1980	Steve & Sue Derek	5/16/1998	Tom & Becky Davis
5/5/2007	Mike & Kerstin Stellato	5/17/2008	Gale & Judy Wilhelm
5/10/1986	Scott & Kathy Hamilton	5/25/2014	Alex & Stacey Burns
5/14/1983	Gary & Tammy Kulik		

CONGRATULATIONS

To Jennifer Hufford and her family on the birth of Viviana Kathleen born on April 4th.



CONGRUITY CHURCH FACEBOOK PAGE

We now have a Facebook page! We will be using the page to promote our upcoming events, dinners and fundraisers. Please like our page and share our posts with your friends. If you would like something posted, please send it in messenger. It will be posted after the communication committee's approval. Please help us spread the word of what an awesome church and church family we have at Congruity!

Remember if you need a ride to or from any activity at Congruity, we will be glad to arrange for someone to pick you up. Please call the office to make arrangements.

CONGREGATIONAL LIFE

TERRY SELEMBO

On Sunday, May 15th, immediately following church, we will have a covered dish lunch and a slide show presentation from the Redstone mission team on their recent trip to Bayville, New Jersey. John Wilhelm will also be speaking. We hope that you will plan on staying after church to eat and get some incite into exactly what the mission team does on their trips.



MISSION
PHYLLIS FRYE

The mission trip to New Jersey was very successful. We did deck railings, insulation, hardy board and floor tile for two families. Come hear more about our trip on May 15 after church. The team really appreciates and thanks you for your support.

There is a possibility of a trip in the fall to South Carolina. If you think you might be interested, let Phyllis know.

The fall mission trip to New Windsor will be Sunday through Tuesday September 18-20. There we will be inspecting items from artisans from all over the world and also inspecting and packing kits (hygiene, school, etc.). This is open to both men and women and is a place you can go if you aren't able to stand long or do heavy lifting. If interested, contact either Phyllis Frye or Judy Koontz (724 668-2843). Cost for the trip is \$100 including a non-refundable deposit of \$25, plus your share of carpooling expenses and spending money.

MANTLE HOUSE MISSION

PHYLLIS FRYE



Work is coming along well at Mantle House Mission. The re-sale store is now open Tuesday thru Saturday. They now have a housemother and are expecting to have young women in the Vine Street home at the end of April. They have acquired a small garage for storage and now are able to work on the George house and do renovations there. Work days are the second Saturday of the month and there is lots to do for both men and women. The mission is on the inside corner of Water Street and Vine Street in West Newton. Just go down the big hill in West Newton clear to the bottom and cross the railroad tracks and before you come to the bridge turn left and go to the end of the street to 132 South Water Street.



WOMAN'S ASSOCIATION

Page 5

PHYLLIS FRYE

Don't forget the Take-Out Turkey Dinner Saturday May 7, pick-up 3-6pm. \$9 reservations should have been made by April 28. It's not too late to donate food items, like corn, applesauce, cranberry sauce, Miracle Whip milk or butter. We also need cakes, pies or a nice dessert. Contact Phyllis Frye about donations or offering to roast turkeys. We will be needing help on Thursday daytime, Friday all day and Saturday till clean-up is finished. Potato peeling is still Friday evening at 6pm. We thank you for your support.

DEACONS

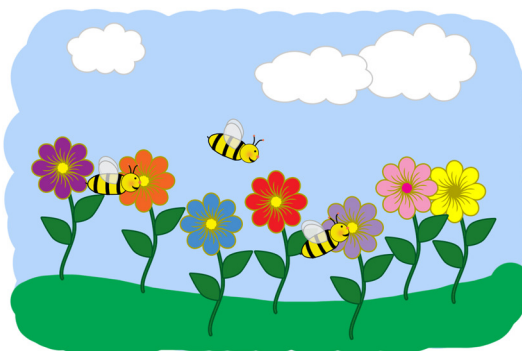
PHYLLIS FRYE



Geranium Orders will be due on May 8th. 4" plants are \$2.25. They will be for Pentecost on May 15th. Checks can be made payable to the Deacons.

Let Your spring planting help the Church grow financially!!

Country Farms Garden Center & Landscape Service is offering a referral program that benefits you, the buyer, and our Church. You receive a **10% discount** on your entire retail purchase and **25% off** on any delivery charges and Congruity receives a **10% rebate** on the total. It's part of their community give back program and it is a win/win for everyone. Country Farms is located on Rt. 119 between Greensburg and Crabtree. Don't forget to pick up a referral card from the table in the Greeting Room. The more people participating, the more money we can raise for the Church.



TREASURER'S REPORT

Page 6

JOHN BLANK

General Fund

	NET Receipts	NET Expenses	Actual Balance	To Date Balance
<i>Adjusted Balance as of January 1</i>			\$ 8,211.89	
January	\$ 6,686.67	\$ 8,342.32	\$ 6,556.24	\$ (1,655.65)
February	\$ 9,689.28	\$ 8,600.23	\$ 7,645.29	\$ (566.60)
March	\$ 8,486.59	\$ 8,356.32	\$ 7,775.56	\$ (436.33)
Year to Date	\$ 24,862.54	\$ 25,298.87	\$ 7,775.56	\$ (436.33)

First Fruits

	Received	Pledged	Balance
January*	\$ 1,126.00	\$ 650.00	\$ 476.00
February*	\$ 1,359.00	\$ 650.00	\$ 1,185.00
March*	\$ 480.00	\$ 650.00	\$ 1,015.00

*Includes Per Capita

	Previous	This Month	To Date
Souper Bowl of Caring	\$ 101.00	\$ -	\$ 101.00
Cents-Ability	\$ 59.51	\$ 16.89	\$ 76.40
Change for the Future	\$ 8.41	\$ -	\$ 8.41
Per Capita	\$ 1,338.00	\$ 40.00	\$ 1,378.00

	Received	GOAL	Balance
One Great Hour of Sharing	\$ 647.00	\$ 900.00	\$ (253.00)

Included in General Fund Balance

Memorial Fund (Excel WKS) **\$ 21,727.98**

	From 2015	Year to Date	Balance	OFFERING TOTALS	
Elevator Fund	\$ (3,886.28)	\$ -	\$ (3,886.28)		
Local Mission	\$ 2,409.47	\$ -	\$ 2,409.47		
Building Maintenance	\$ 1,415.92	\$ 645.00	\$ 2,060.92		
				3/06/2016	\$2,333.00
				3/13/2016	\$1,179.00
				3/20/2016	\$1,690.00
				Maundy Thursday	3/24/2016 \$781.00
				Easter Early	3/27/2016 \$1,393.00
				Easter 11AM	3/27/2016 \$550.35
					4/03/2016 \$1,054.00
					4/10/2016 \$1,517.00
					4/17/2016 \$1,071.76



MISSION INTERPRETATION & STEWARDSHIP

TIM D'AURORA

As you can see from the financial report, March was a good month financially. It helped to have the extra service and the larger than average attendance, but it was still good to see. I am also happy to report that although it shows that we only collected \$747 for our One Great Hour of Sharing special offering, we actually surpassed our \$900.00 goal by \$126.94. Congratulations on a great job.

Now we need to keep this up for our next special offering. It is the Pentecost Offering and our goal is \$375.00 with our local portion of 40% going to the Blackburn Center. This is a great cause and can really use our support.

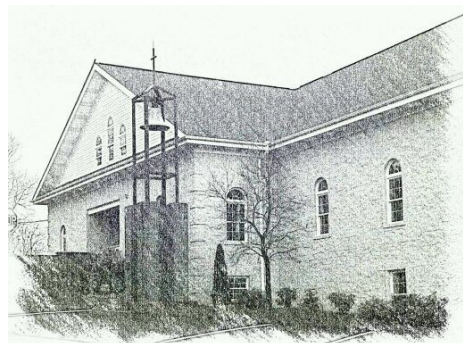
I want to take this opportunity to thank everyone who helped with the spaghetti dinner. Whether you donated something, made a cake, helped at the dinner, made a basket, brought a guest or just came and ate, you contributed to our success. It looks like we made a profit of \$1179.00 when you combine the dinner proceeds with the basket auction proceeds. We need to continue to spread the word on future dinners.

Next up, we have the first of our **Hoagie Sales**. This will benefit the general fund. We will assemble the hoagies on Thursday, May 19 and orders should be in to me by Monday, May 16. You may call me at 724-668-8319 with your orders or give them to me at Church Sunday. We have always had a very positive response on the quality of the hoagies, so if you haven't sold them before, try it. There is an order form elsewhere in the newsletter. We will also need help on Thursday assembling the hoagies. We usually start a little before 6:00 and hoagies can be picked up after 6:30. It doesn't take long and we have fun, so come out and help. But it is even more important to get out and **sell, sell, sell**. This is probably the easiest fundraiser we do so let's work extra hard to make it one of the more successful.



See, I didn't even once ask you to prayerfully consider increasing your giving. Of course, there is always next month.

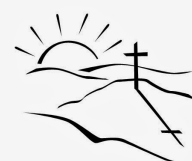
Congruity Presbyterian Church
136 Fenneltown Road
New Alexandria PA 15670



We're on the web!
congruitychurch.org

NON PROFIT ORGANIZATION
U.S. POSTAGE PAID
PERMIT No 5
NEW ALEXANDRIA PA 15670

SUNDAY SCHOOL AT 9:45 AM
WORSHIP AT 11:00AM
PLEASE JOIN US!



ATTENDANCE

Worship		Sunday School		
		A	Y	Total
3/24	37	Maundy Thursday		
3/27 8am	66	11	19	30
3/27 11am	50			
4/3	34	9	16	25
4/10	57	10	21	31
4/17	48	13	16	29

CHURCH STAFF AND OFFICERS

Pastor	Cliff Foster
Clerk of Session	John Blank
Deacon Moderators	Debbie Perino
Treasurer	John Blank
Financial Secretary	Michelle Kepple
Church Secretary	Dorothy Martz
Music Director	Vicki Walters
Newsletter Editor	Yvonne McIlroy
Webmaster	John Blank

Dorothy is in Monday & Thursday mornings. Cliff is in the office most mornings.

Please put newsletter items in the folder at the church or email to
congruitynewsletter@yahoo.com

